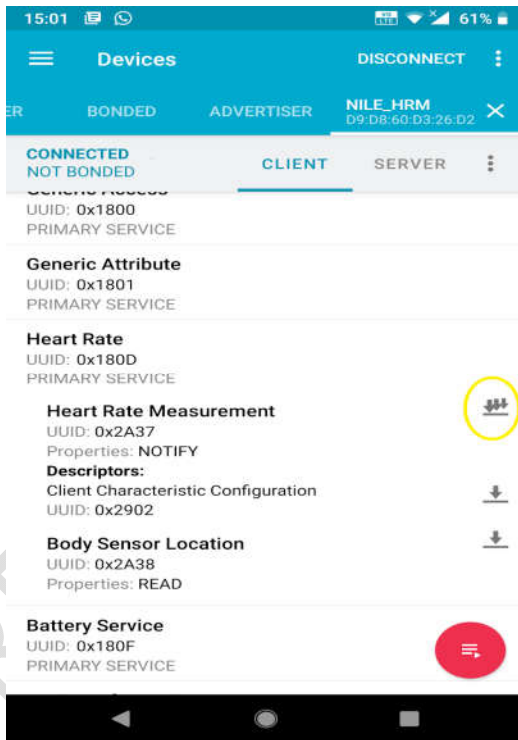


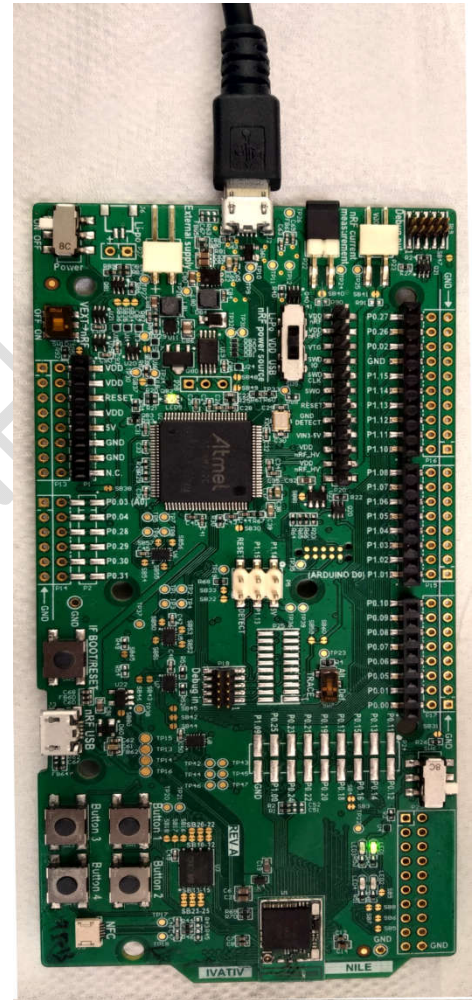
NILE

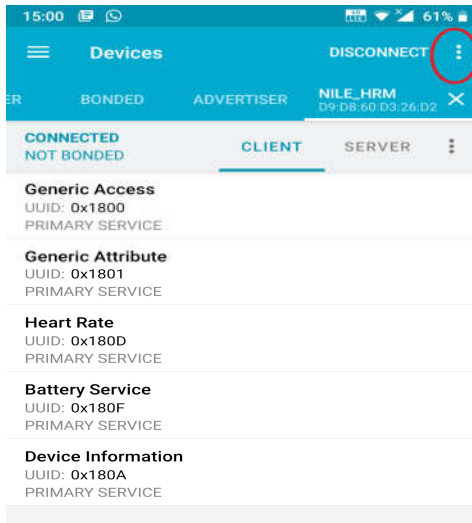
BT 5.0 + ZB/Thread + NFC-A Standalone Module

- ❖ Unpack the Kit box and verify all the items are available or not
- ❖ Connect Micro-USB cable between PC USB port and J2 Connector on DVK board
- ❖ Power ON the NILE DVK
- ❖ NILE DVK is preloaded with Nordic SDK Heart rate monitor
- ❖ Observe LED1 is blinking for every 2sec which indicates advertising
- ❖ Open the nRFconnect application (Get the nRF connect app from play store)
- ❖ Scan for device with name NILE_HRM and connect to the device
- ❖ Observe LED1 blink constantly which indicates connection state
- ❖ After NILE is connected, tap on Heart rate service
- ❖ Observe in nRFconnect app -> Client window -> click notification symbol (Ref: Yellow circle in below image)

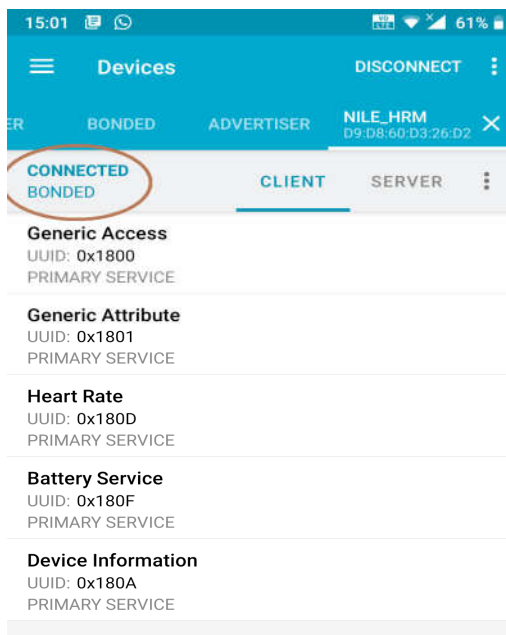


- ❖ Observe simulated readings of Heart rate measurement, RR interval, sensor contact point
- ❖ Initiate Bond if you need to encrypt link





- ❖ Click on the options shown in the red circle on top ->click on bond.
- ❖ After bonding you will see



- ❖ This shows the basic BLE communication between two devices i.e. indicating that NILE DVK is working fine